

Initial Teacher Training (ITT)

Prospectus 2023/24



Contents

About Tes and Tes Institute	3
What is Initial Teacher Training (ITT)?	4
Initial Teacher Training (ITT) routes	5
Who should apply?	6
Course delivery	7
Assessment and expectations	8
Course outcomes	9
Continued support from Tes Institute	11
Course fees	12
Funding your course	13
Our ITT partner schools	14

About Tes and Tes Institute

We power schools and enable great teaching worldwide, by creating intelligent online products and services to make the greatest difference in education. For more than 100 years we've worked and grown in partnership with teachers and schools to become a global community of 13 million educators.

At Tes Institute, we combine the best in online and face-to-face learning to help schools and school staff all over the world to be the best they can be – from trusted support staff and passionate graduates to confident teachers and leaders.

From subject knowledge enhancement and teacher training to Master's level qualifications, our unique approach allows students to study in their own time, learning from their peers as well as from highly experienced tutors.

Why choose Tes Institute?

Our Initial Teacher Training (ITT) course provides a unique opportunity for you to train as a member of a school team and learn about teaching from dedicated, experienced colleagues in schools.

You'll benefit from high quality online training sessions, written by a range of practising teachers, nationally renowned educationalists and academics, that will underpin and support your practice in school.



What is Initial Teacher Training (ITT)?

We're delighted to be working in partnership with 10 lead partners and their partnership schools to deliver initial teacher training through our Department for Education (DfE) accredited ITT course.

The course provides a blend of online learning and in-school experience which leads to qualified teacher status (QTS), with an option to add a Postgraduate Certificate in Education (PGCE).

We work in partnership with schools in Essex, Greater London and Kent to offer primary and secondary ITT courses in key teaching subjects including:

- **Primary**

- **Primary with maths**

- **All main secondary subjects including:**

- Art
- Biology
- Chemistry
- Computing
- Design and technology
- Drama
- English
- French
- Geography
- German
- History
- Maths
- Music
- Physical education (PE)
- Physics
- Religious education (RE)
- Spanish

Initial Teacher Training (ITT) routes

We offer two ITT training routes, ITT employment based and ITT fee-funded, both lasting one academic year. Both routes allow you to train in our partnership schools as a member of the school team and learn your skills from experienced professionals.

You'll gradually start to take lessons alongside training and, in time, take shared responsibility for pupils. You'll also attend school professional studies and professional development training. On the **employment based route**, you may be teaching your own classes from the start of the course.



University of
East London

PGCE option

Both our ITT routes give you the option to add a Postgraduate Certificate in Education (PGCE) that will be awarded by our partner university, University of East London (UEL). If you choose this option, you'll be required to complete a number of additional written assignments to the level specified by UEL.

ITT part-time (fee-funded route only)

Our part-time ITT fee-funded route includes everything we offer with our full-time course but with more time and flexibility, so you can fit your training around your existing commitments.

You'll spend three days per week in school with the equivalent of one day per week for your online study; spread over four terms and two academic years (starting in September of year one and completing in December of year two).

If you choose the PGCE option, you'll complete two assignments in-line with the full-time trainees. You'll then receive your PGCE award after you complete your school practice in December of year two, and get submitted to the next University Assessment Board.

Who should apply?

You should be a motivated individual who has a passion to learn, teach and work as a member of a school team. You must meet the following entry criteria:

- Have achieved a Grade C/4 in GCSE English, maths (and science if you are training to teach at primary level) or an equivalent qualification
- Hold a Bachelor's degree from a UK higher education institution or equivalent qualification
- If you have studied English as a foreign language you may be required to provide evidence that you have passed a Secure English Language Test (SELT) at level B2 or above of the Common European Framework of Reference for Languages (CEFR) with an approved provider within the last two years
- Possess the appropriate qualities, attitudes and values expected of a teacher
- Show competency in fundamental skills in English and maths before the award of QTS
- Satisfactorily complete all safeguarding checks before the start of training (and such checks must not identify you as being unsuited to working with children)
- Meet the Secretary of State's requirements for health and physical capacity to teach
- Meet the Department for Education's (DfE's) financial eligibility criteria to be accepted for a publicly funded place on this ITT course



Course delivery

Our Initial Teacher Training (ITT) course is delivered in our partnership schools through a unique blend of online learning and in-school experience.

Online teaching courses

Throughout the course you'll participate in online learning via an innovative and interactive e-learning platform. You'll have the equivalent of one day per week for your online study.

You'll be issued with login details at the start of your course. You can then access course materials, lessons and tutorials from any internet-enabled device, making learning extremely flexible.

Your in-school mentor and subject/phase-specific pathway tutor

You'll have weekly meetings with your expert in-school mentor who will support you throughout your course.

You'll also be appointed a personal pathway tutor who will provide you with regular feedback on your progress, and coach and mentor you on subject knowledge and teaching practice development. They'll work with you to develop your online work, and will visit and support you in school.

Partnership face-to-face workshops

Our partnerships deliver regular face-to-face workshops as part of your ITT course. These workshops are usually delivered in the lead school and are designed to support our delivery of the DfE Core Content Framework for ITT. They will support you to contextualise your training and discuss your developing practice, as well as providing a network of colleagues from within your partnership of schools.



Assessment and expectations

Assessment

Your progress will be continually tracked, monitored and assessed by your school-based mentors, senior school managers, pathway tutor and programme director to ensure that you make effective progress towards achieving the Teachers' Standards.

Your pathway tutor will continue to monitor your portfolio and reflections, together with an evaluation of the impact of the programme on your own learning and the implications for your pupils' learning.

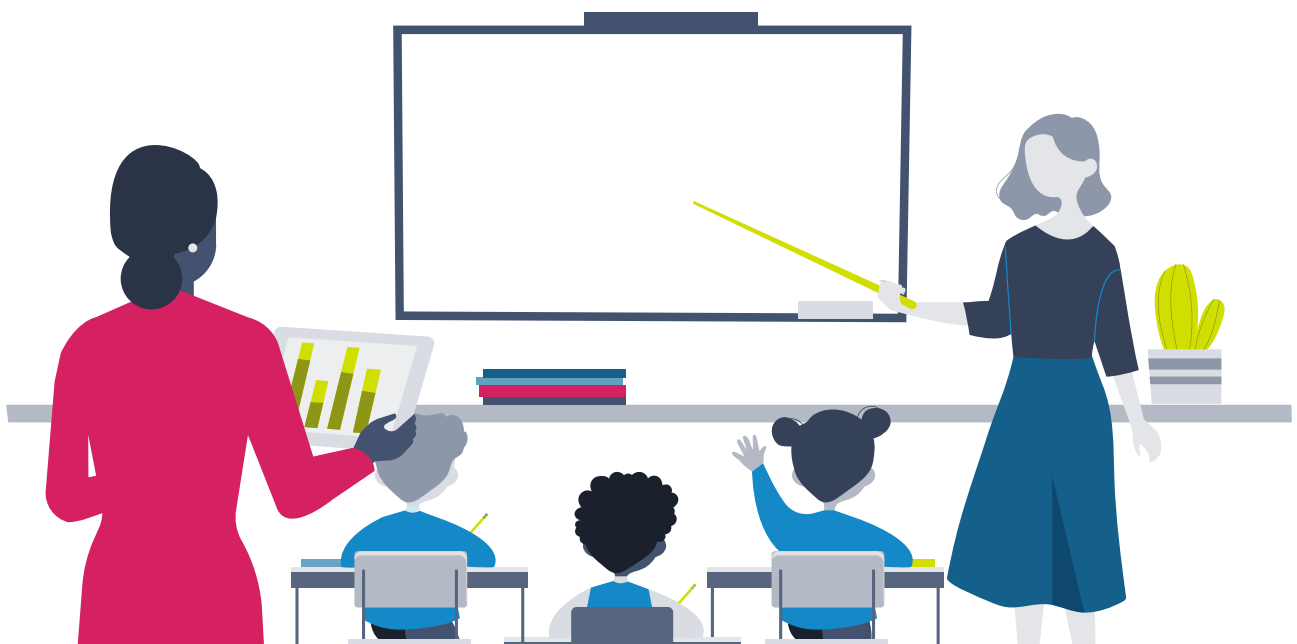
If you choose the PGCE option you will be required to complete a number of written assignments in addition to the other elements of the course.

Expectations

You'll be expected to attend all school experience placements (full-time during the school week) and actively participate in online learning. You'll have a series of self-assessment exercises that you'll be required to complete, along with formal written assignments.

If required, you'll be expected to complete additional independent study where necessary.

During your course you'll take on teaching responsibilities that will allow you to try out and evaluate teaching activities and plan and evaluate your lessons.



Course outcomes

Our Initial Teacher Training (ITT) course will help you to gain research-informed knowledge and understanding of teaching and learning, with opportunities to practice in the classroom and develop your teaching skills, coached by well-trained, expert colleagues. You'll be able to:

- Gain QTS and an optional PGCE
- Develop knowledge, understanding and practice of your chosen phase and subject
- Develop research-based teaching and learning practice to use in the classroom
- Gain knowledge of different school contexts through practical experience in the classroom
- Develop the ability to reflect critically and think on your feet
- Gain knowledge and develop skills of effective teaching and learning by following our curriculum which embeds the DfE's ITT Core Content Framework



Looking to gain QTS in your own school?



Our funded, **Level 6 Postgraduate Teaching Apprenticeship** is a nationally recognised work-based route into teaching that enables you to gain QTS and an optional PGCE while you work in your own school, anywhere in England, with support from your school, your mentor and the Tes Institute team.

You won't have to pay anything and there will be little or no extra cost to your school*.

Apply now to start your apprenticeship in January or September 2024.

Find out more: tes.com/institute/postgraduate-teaching-apprenticeship

*Apprenticeship levy paying schools can get full funding, with non-levy paying schools contributing just 5% of costs.

Continued support from Tes Institute

As a responsible provider of teacher training and development, we want to ensure that early career teachers (ECTs) completing their training at one of our partner schools continue to receive transition support into their first year as an ECT.

In the first six months of your ECT years you'll continue to have access to the online content that you studied during your ITT course.

You may also be able to access a transition visit* (usually half a day) from your pathway tutor to provide additional support for you and your induction tutor, should you need it.

All of our courses are designed to create great teachers, and we believe that providing continued support during your first year helps you to become a more confident teacher.

This value added service is unique to Tes Institute and is included as part of your course.



* Your school may be charged a fee for pathway tutor transition visits.

Course fees

The tuition fees below are for applicants who meet the full entry/eligibility criteria set by the DfE, Tes Institute and our partnership schools. Trainees may also be eligible for a training bursary from the DfE to cover some or all of their tuition fees if available.

Payment options may also be available on request.

ITT tuition fees for academic year 2023/24

£8,625 ITT leading to QTS only

£9,250 ITT leading to QTS and a PGCE



Funding your course

Grants and loans

You may be able to apply for a tuition fee loan and/or a living cost loan or grant through Student Finance England (SFE) to help with costs associated with the course. Please see the government's [funding your teacher training page](#) for more information.

Bursaries and scholarships from the DfE

Depending on the subject you wish to teach and whether you meet the eligibility criteria, you may be eligible to receive a tax-free ITT training bursary from the DfE. On the part-time course you'll be eligible for the same bursaries, but they'll be paid over the longer period of the course.

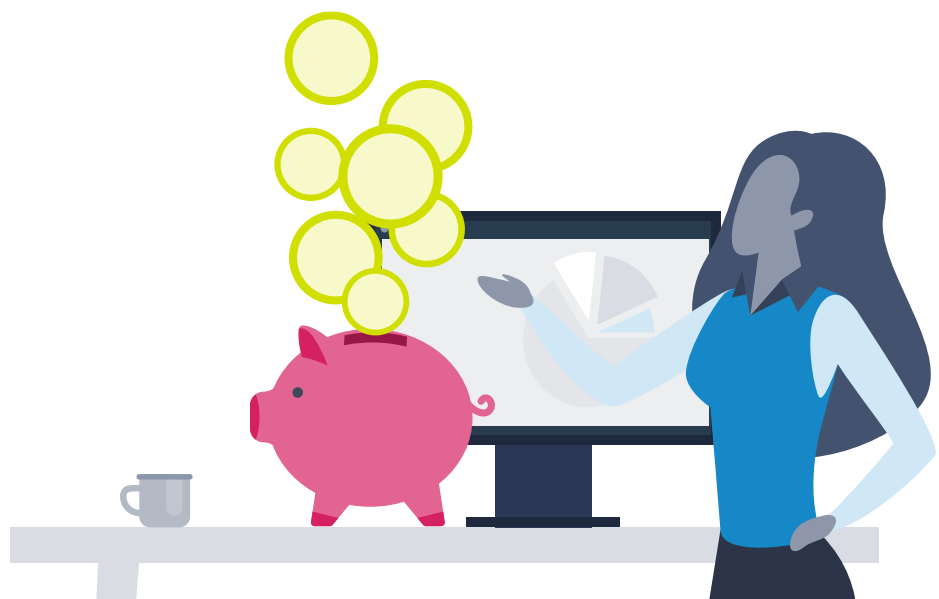
You are only eligible for a bursary if you are entitled to support under the DfE student finance criteria. Trainees from the EU, Iceland, Liechtenstein, Norway and Switzerland should read the UK government guidance [Studying in the UK: guidance for EU students](#).

For the academic year 2023/24, the DfE are offering bursaries of:

- £27,000 in chemistry, computing, mathematics and physics
- £25,000 in geography and languages (including ancient languages)
- £20,000 in biology and design and technology
- £15,000 in English

You may be eligible for a bursary if you have a 1st, 2.1 or 2.2 in your Bachelor's degree, or if you hold a Master's degree or PhD.

Scholarships are also available in chemistry, computing, modern foreign languages, maths, and physics. Please see the [DfE's scholarships and bursaries page](#) for more information.



Our ITT lead partners

We're currently working with 10 lead partners and their partnership schools to deliver ITT in Essex, Greater London and Kent.

Each course is specifically designed for the school and start dates may vary from school to school.

We recommend you contact the school directly to find out more about their specific start dates, subjects they offer and places available.

If you'd like to apply for an ITT course you'll need to apply directly to one of our lead partners, which you can find on the next page.

Tes Institute and its partner schools are committed to the safeguarding and well-being of children and young people. Full safeguarding checks are made on all trainees.

See lead partners: tes.com/institute/itt-lead-partners



BTSA Benfleet Team Supporting All

Area: Essex

Lead school: The Appleton School

Website: btsa.uk

E-ACT

Area: National

Head office: Kettering

Website: e-act.org.uk

Essex Schools ITT

Area: Essex

Lead school: Davenant Foundation School

Website: essexschoolsitt.com

Habs Institute of Professional Learning

Area: South London

Website: habstrustsouth.org.uk/Habs-Institute-for-Professional-Learning

Havering Teacher Training Partnership (Secondary)

Area: Havering

Lead school: Hall Mead Academy

Website: haveringteachertraining.co.uk

Havering Train 2 Teach (Primary)

Area: Havering

Lead school: Engayne Primary School

Website: haveringtrain2teach.com

Plume Community Teaching Partnership

Area: Essex

Lead school: The Plume School

Website: plumeitt.co.uk

Teach in Kent

Area: Kent

Lead school: Hilltop Primary Academy

Website: teachinkent.co.uk

Teach London South East (TLSE) Partnership

Area: South London

Lead school: Highway Primary School

Website: teachlondonsoutheast.co.uk

Thurrock Teacher Training

Area: Essex

Lead school: St Clere's School

Website: st-cleres.thurrock.sch.uk

Supporting teachers and schools since 1910



Contact us for further information and advice
tes.com/institute
020 3194 3200

Questions about ITT? institute@tesglobal.com